

# PROTEK<sup>®</sup>-200

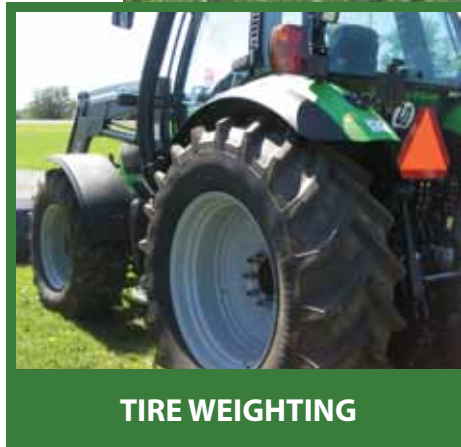
## A PREMIUM PRODUCT TO GROW YOUR BUSINESS

– ALL YEAR ROUND



## One Product with THREE Great Applications!

**PROTEK<sup>®</sup>-200** will work for you throughout the year for a variety of Year Round Uses.



TIRE WEIGHTING



ICE MELTING



DUST CONTROL



## TIRE BALLASTING

**PROTEK<sup>®</sup>-200** liquid greatly improves vehicle performance when used to weigh tires and improve traction on tractors and off-road equipment. It does this by putting extra weight right where it's needed - right on the tread where the driving wheels meet the ground.

### FEATURES

- Increased traction
- Increased tire & tractor life
- Greater fuel economy
- Safe for the environment
- Less toxic and non-flammable
- Blended bi-product of the corn industry
- Specifically engineered to ensure a consistent quality
- Eutectic point of -85°F (-65°C)
- A US gal weighs 10.8 lb (4.5 Litre weighs 13 lb)
- High specific gravity equals less volumes required
- Blended with Organic Additives

## ICE MELTING

**PROTEK<sup>®</sup>-200** liquid provides fast and effective snow and ice control that is easy to apply, spreads evenly, eliminates bounce and scatter of treated salts and works at a wider range of temperatures with a eutectic point of -85°F (-65°C)

### FEATURES

- Versatile anti-icing, de-icing and pre-wetting agent
- Scientifically engineered for high performance
- Superior anti-bonding properties
- Quickly penetrates snowpack
- Reduces bounce & scatter in pre-wet applications
- Ideal for all weather conditions
- Less corrosive than salt brine
- Less toxic
- Cost-effective

## DUST CONTROL

**PROTEK<sup>®</sup>-200** liquid is used for both dust and erosion control. The hygroscopic (attracts moisture) characteristics gives it the ability to maintain natural surfaces for months at a time with a single application.

### FEATURES

- Reduced particulate matter emitted into the environment
- Reduced health related risks (allergy's, asthma, etc.)
- Safer roads
- Less loss of fines and aggregate
- Penetrates road aggregate, coating & binding particles
- Binding action keeps road dense
- Maintains moisture in base
- Reduces gravel & labor costs
- Blended with Organic Additives